

# JPI Healthy and Productive Seas and Oceans **A New Frontier**



# Content

## 1. What is Joint Programming?

1. Scientific policy driver

## 2. Oceans as a grand challenge

1. Policy drivers


## 3. JPI Oceans

1. Objectives
2. State of Play

An underwater photograph showing sunlight rays filtering down through the water surface, creating a serene blue environment.

# What is Joint Programming?

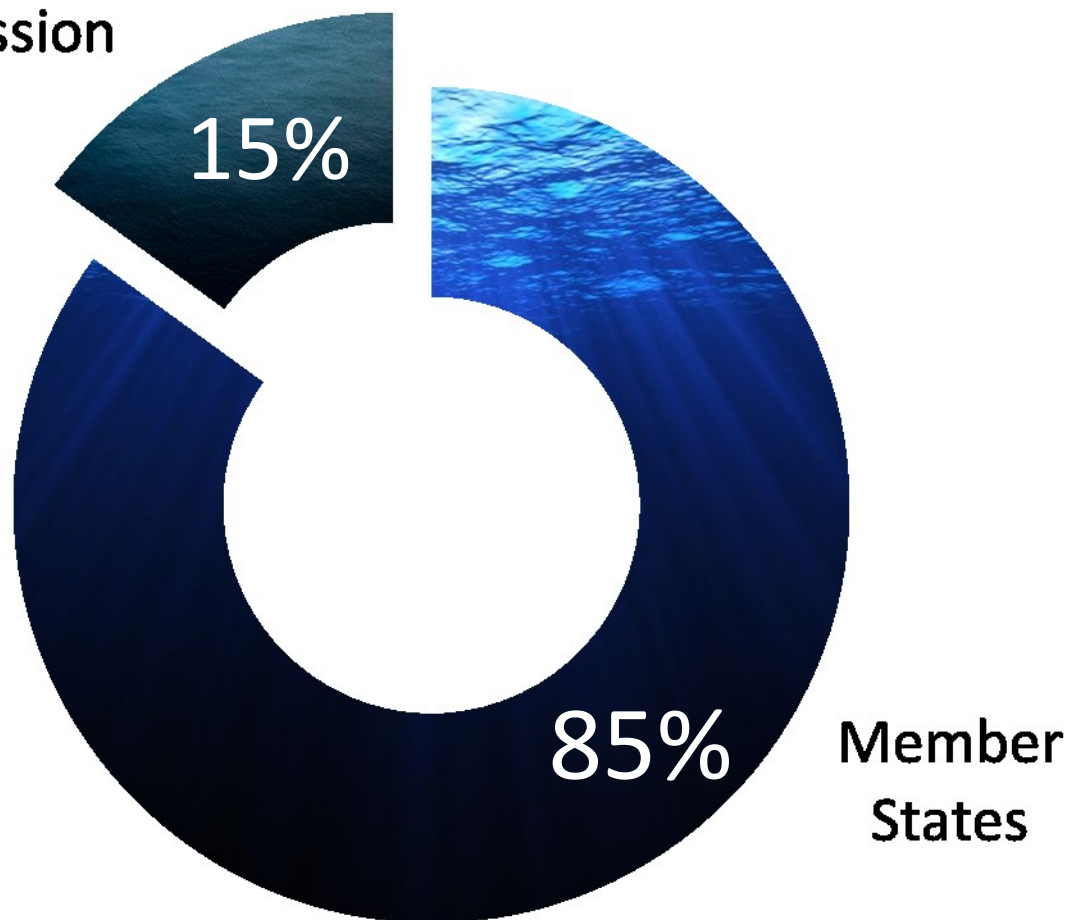




A concept to tackle  
challenges that can  
not be solved solely  
at national level

## Research funding in Europe

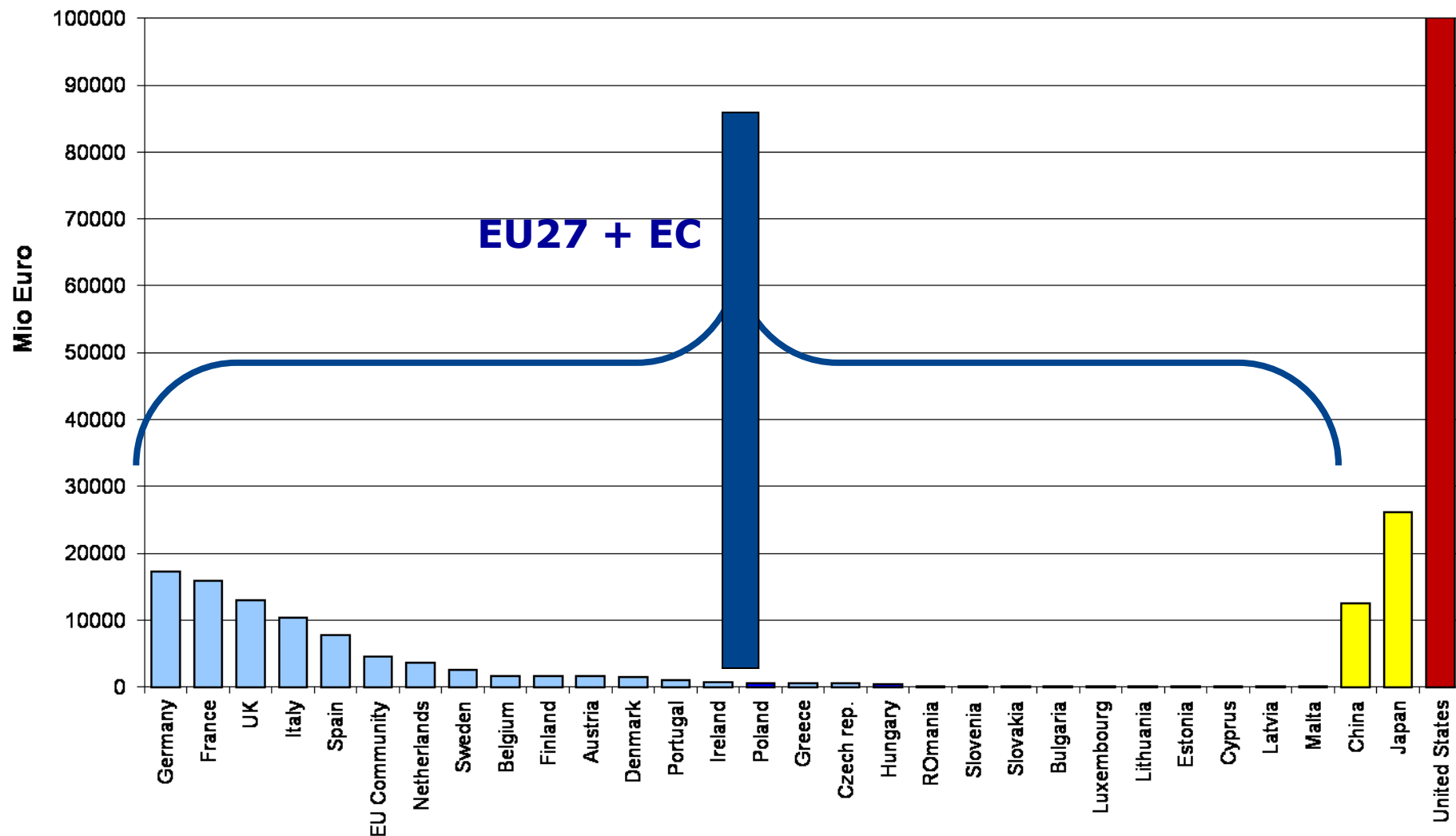
Intergovernmental and  
European Commission





Why?

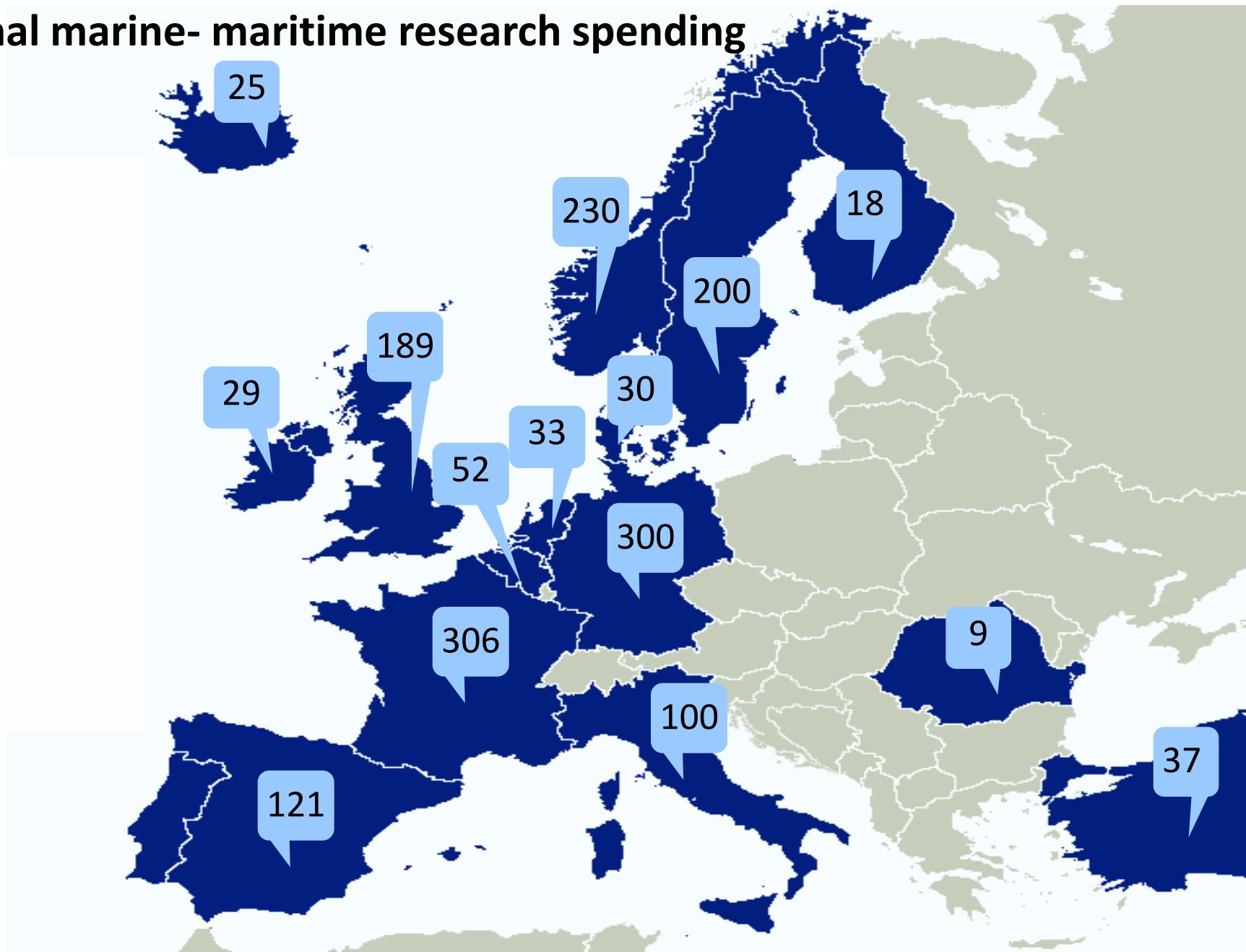
# Public Funding for Research



# Oceans as a grand challenge



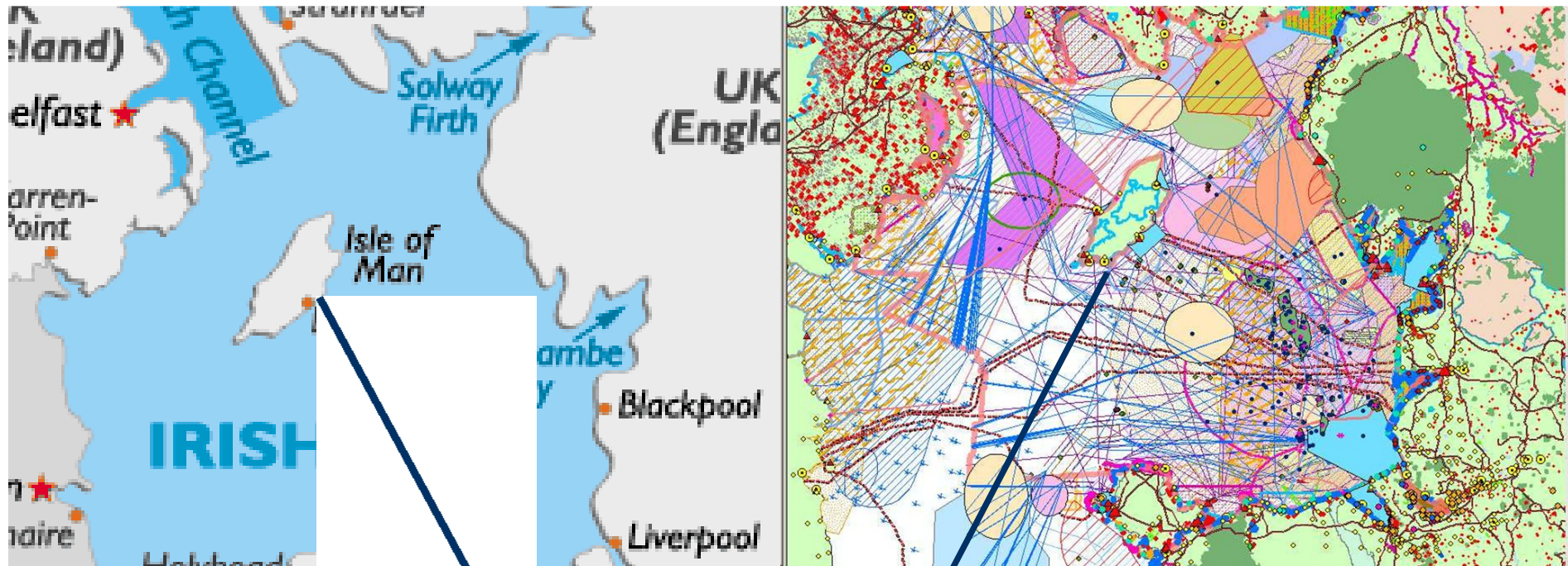
# National marine- maritime research spending (M€)



# Marine and Maritime Research

(estimates based on input and data analysis)

Marine – maritime annual research funding of JPI Oceans members		Marine –maritime annual research funding in FP7	
Marine Environment	25 %	Marine Environment *	29 %
Biological resources	25 %	Biological resources	19 %
Non-biological resources	20 %	Non-biological resources	21 %
Fisheries management	10 %	Oceans of Tomorrow (cross cutting)	9 %
Spatial planning and Socio economic research	5 %	Other	22 %
Climate and Ocean	15 %	* Marine environment probably includes climate change	
<b>Total</b>	<b>1777 M €</b>		<b>213,5 M €</b>



The Isle of Man



# Marine litter

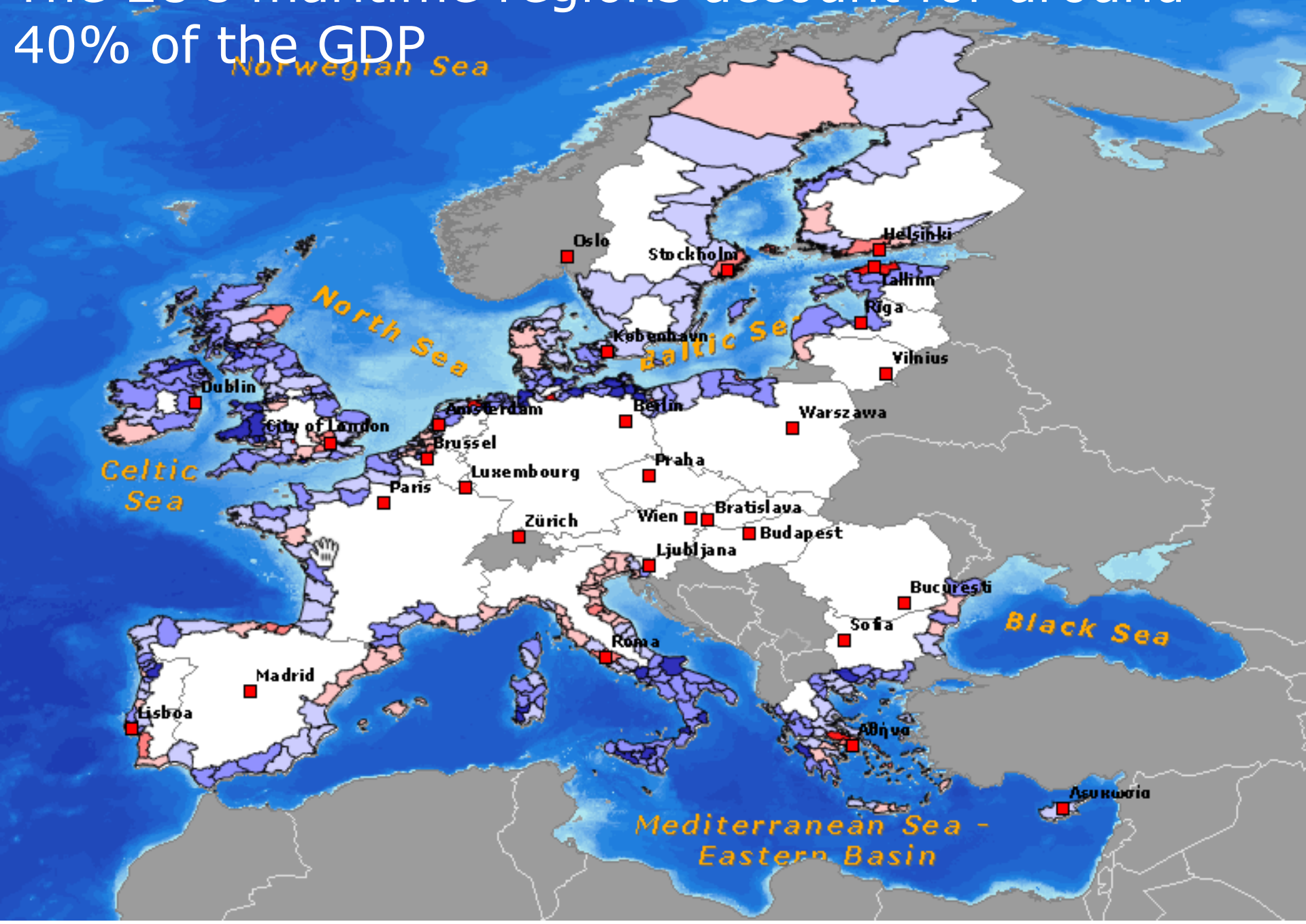




A large, rounded rectangular graphic with a blue gradient background. The top half shows a bright, sunlit surface of water with ripples, and the bottom half is a deep, dark blue. Several bright, white, diagonal lines representing sunlight rays penetrate from the surface into the deep water.

# Opportunities

The EU's maritime regions account for around 40% of the GDP







Maritime transport: 90% of EU's external trade

Fisheries, aquaculture and food processing:  
€32 billion Euros yearly, 0.5 million jobs.





A close-up photograph of several slices of raw salmon sashimi arranged in a fan-like pattern. The salmon has a vibrant orange-pink color and visible white fat lines. A small, round dollop of bright green wasabi is placed on one of the slices on the right side of the frame. The background is a solid, slightly darker shade of orange, matching the salmon.

The average  
consumption of fish is  
**22.3** kg/person/year in  
the EU .





European maritime tourism: **3 million** jobs  
and **72 billion** Euros of revenue per year.

# Policy Context



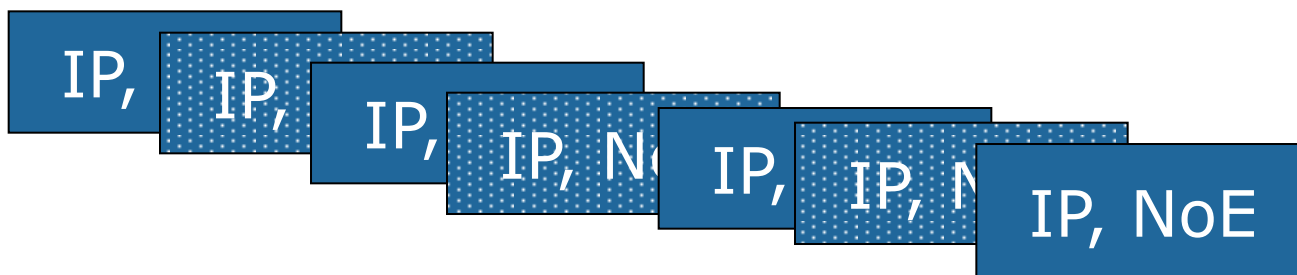
EU's Integrated Maritime Policy  
MSFD, CFP,.....



An underwater photograph showing sunlight rays filtering down through the water surface, creating a serene blue environment.

# JPI Oceans?

FP5



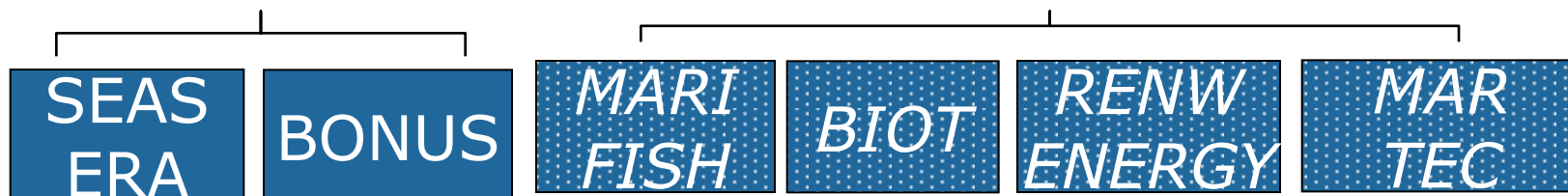
FP6



Marine Environment

Marine Resources

FP7



Horizon 2020



A coordinating and  
integrating platform  
for marine and  
maritime research





17 Participating countries  
(+ Outermost regions)





An underwater photograph showing sunlight rays (Tyndall effect) filtering down from the surface, creating a dramatic blue and white light pattern against the dark water.

Why?



Avoid Fragmentation...





I WILL NOT COPY AGAIN I WILL NOT COPY A  
I WILL NOT COPY AGAIN I WILL NOT COPY A  
I WILL NOT COPY AGAIN I WILL NOT COPY A  
I WILL NOT COPY AGAIN I WILL NOT COPY A  
I WILL NOT COPY AGAIN I WILL NOT COPY A  
I WILL NOT COPY AGAIN I

...and unnecessary duplication





Facilitate cooperation  
Plan common initiatives





Look for synergies



An underwater photograph showing sunlight rays filtering down through the water surface, creating a serene blue environment.

# Added Value





Long term perspective



High Level  
commitment



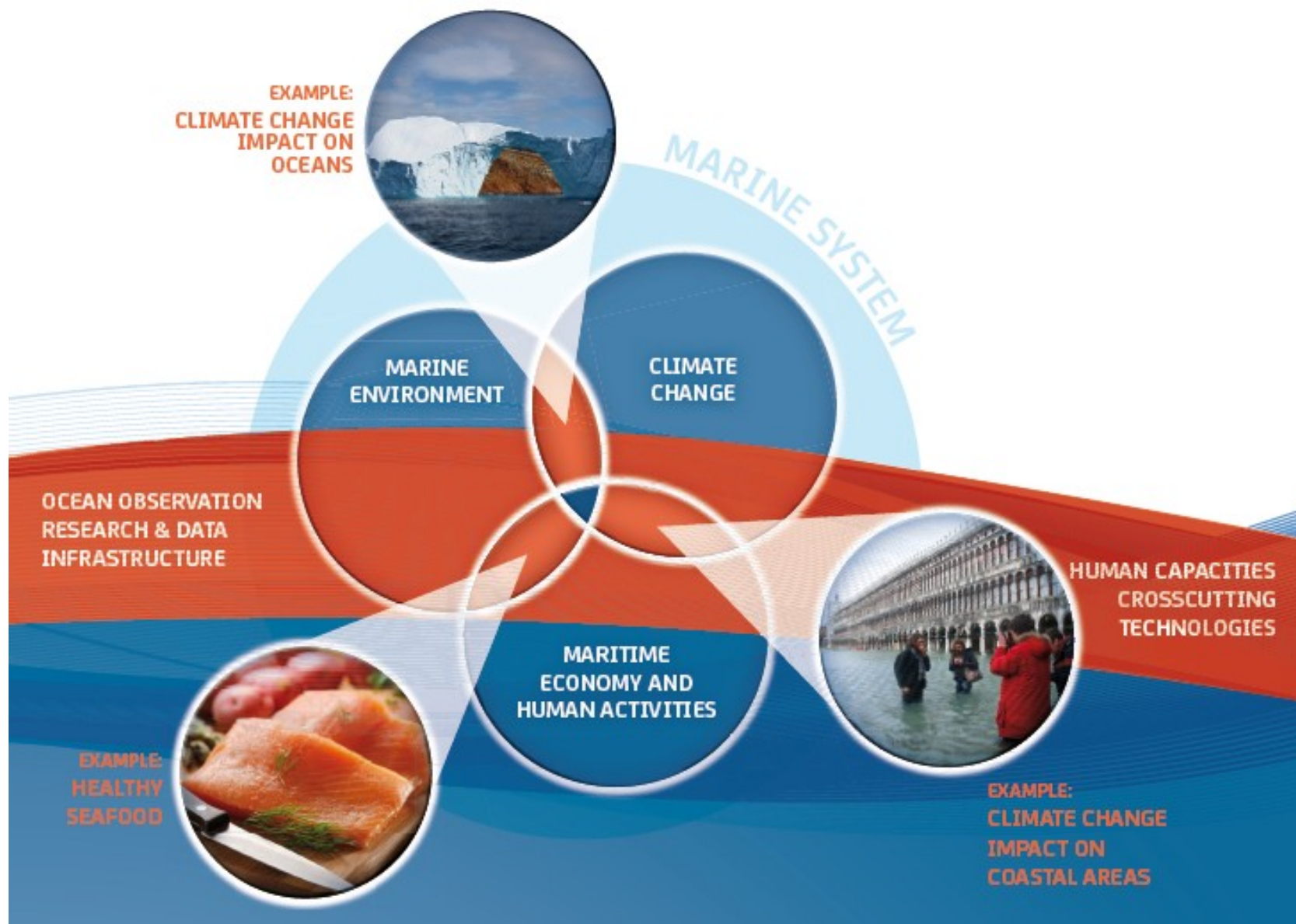
Voluntary basis  
(Variable geometry)





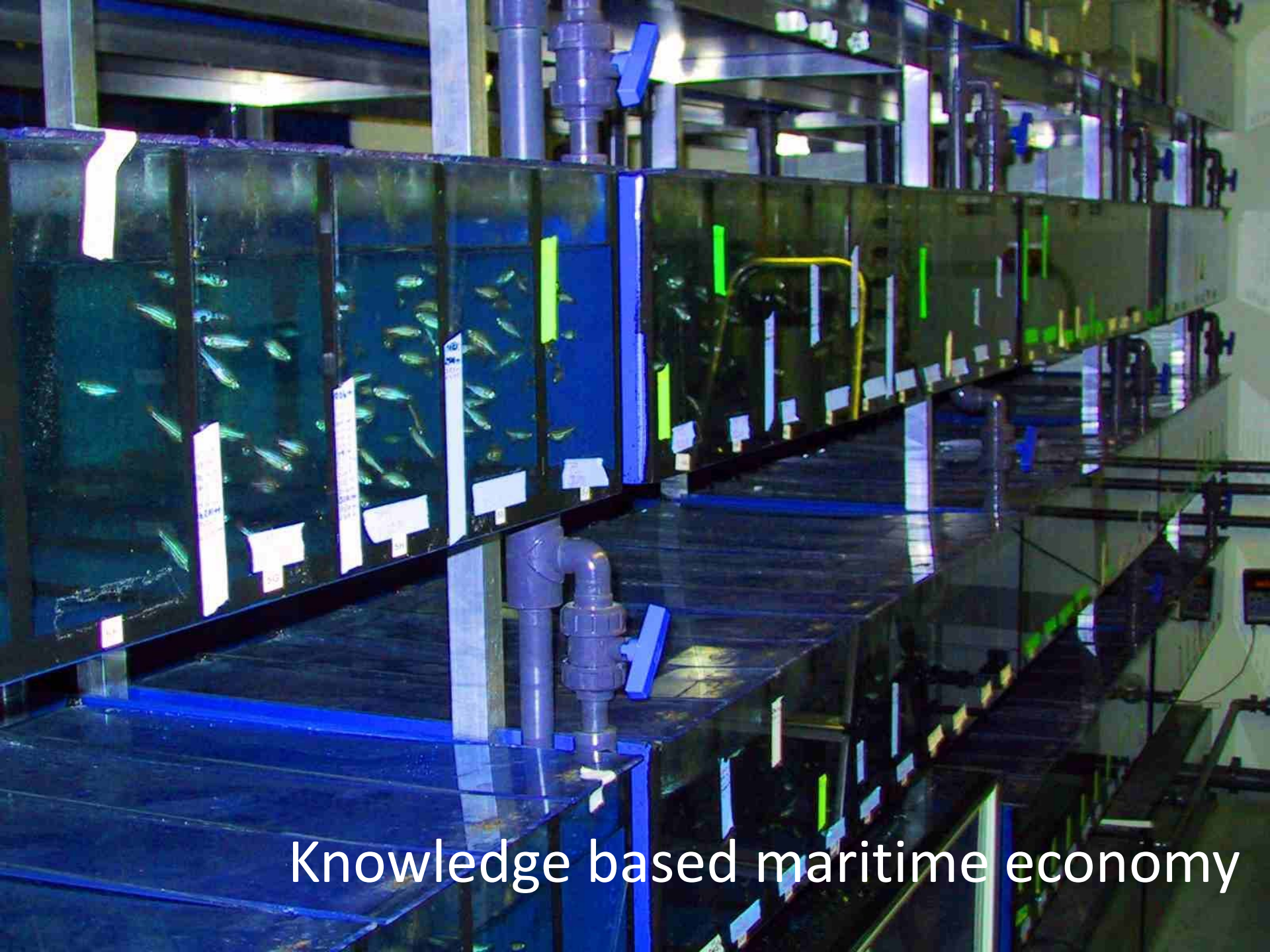
Different tools

# Vision document



# Goals





Knowledge based maritime economy





Good environmental status of the seas





Optimise the response to climate change....





...and its impacts



# Objectives



Foster enabling cross-cutting marine technologies across the maritime sectors





Understand climate change impact on coastal areas and the design of marine structures and activities, to optimise mitigation and significantly reduce costly damages

Understand and mitigate the impact of climate change and pressure from human activities on the marine environment to reach GES of our seas by 2020

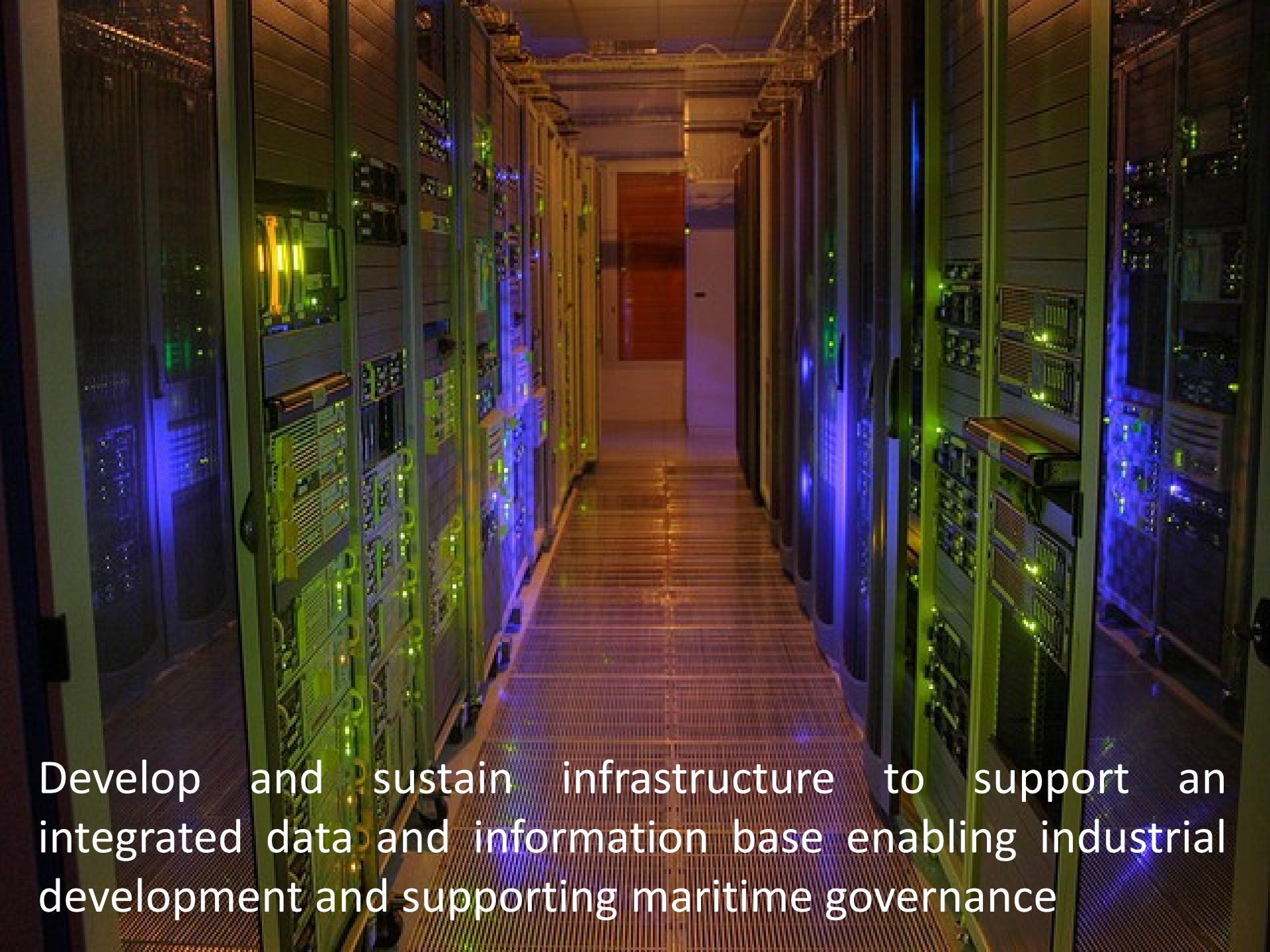






Improve understanding of marine ecosystems and their processes, in particular delivery of ecosystem services and the impact of human activities





Develop and sustain infrastructure to support an integrated data and information base enabling industrial development and supporting maritime governance

Foster the inter-disciplinary  
human capacities that are  
necessary to fulfil the JPI's  
goals





Develop a

research

to

policy

mechanism



# Foster the marine bio economy





An underwater photograph showing sunlight rays filtering down through the water surface, creating a dramatic blue and white light effect.

# How?

# Economy-Science-Governance **interactive** interface

## Target Groups

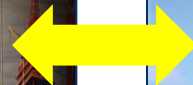
Industry  
&  
Services



Researchers  
&  
Technologists



Policy makers  
&  
Society







Thinking out of the box,  
forget historical boundaries

Lars Olav Lie, CEO



Libas 2007 cruise tracks



- Libas is 94,4 meter 17,6 meter

Unique combination of the best  
**fishery competence** with the  
most **advanced technology** infrastructure!!  
Other ideas for dual uses - Cleaning of the Oceans,....

## Vision and ToR Precondition !!!!!!!!!!!

The JPI will foster a science-policy-industry P-P-P-dialog, bringing stakeholders into the governance structure.

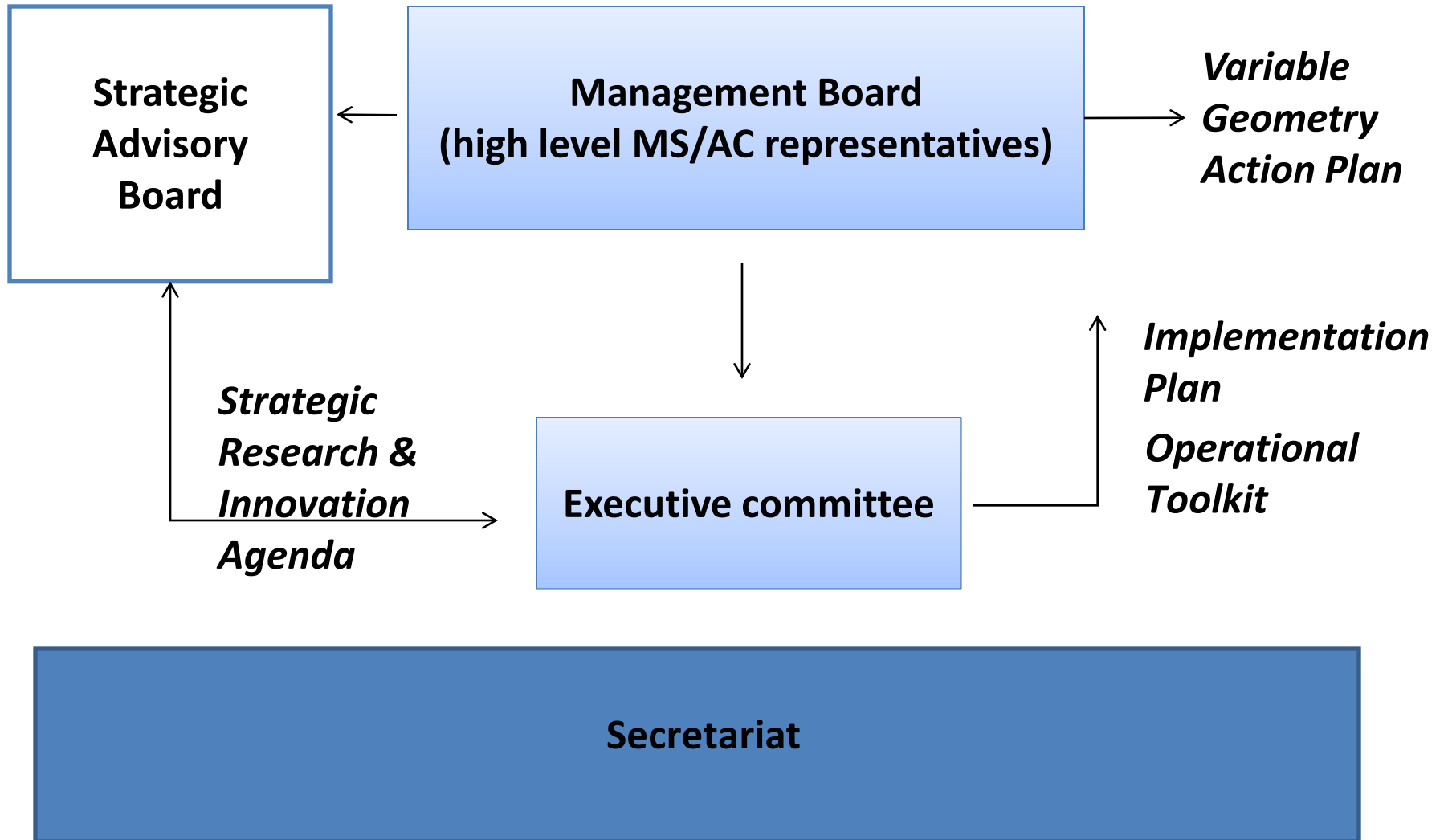
**However the JPI in order to achieve its goal sees the need to take stakeholder involvement to a next step of involvement.**

The JPI will be implemented by an **interactive involvement** with identified relevant stakeholders:

- ☐ Industries and Service providers (**fishermen, suppliers of maritim equipment,... recalling Libas**)
- ☐ Researchers and technologists
- ☐ Policy Makers
- ☐ Societal organisations

This will secure relevance, defining and agreeing on objectives and sharing of roles and deliverables and in particular the uptake and use of knowledge.





An underwater photograph showing sunlight rays filtering down through the water surface, creating a serene blue environment.

# State of play



# Milestones 2011

April

September

December



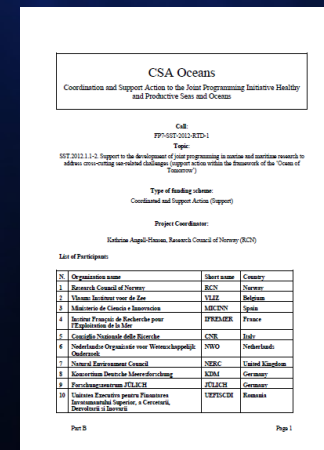
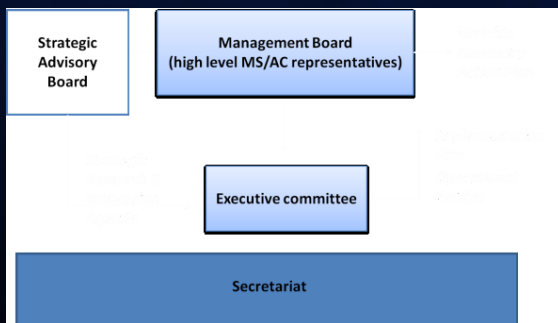
# Next Steps:

**Consolidate  
governance**

**Horizon2020**

**Operationalise  
CSA**

**SRIA input  
Pilot Actions**





Email: [ka@rcn.no](mailto:ka@rcn.no)

Twitter: [@jpioceans](https://twitter.com/jpioceans)

Website: [www.jpi-oceans.eu](http://www.jpi-oceans.eu)

## Photo credits

- [{maira.gall}](#) on Flickr
- [danitarrino](#) on Flickr
- [kaibara87](#) on Flickr
- [acornchief](#) on Flickr
- [Ludovic Hirlimann](#) on Flickr
- [Annamagal](#) on Flickr
- [Fon-tina](#) on Flickr
- [k.kazantzoglou](#) on Flickr
- [patrmach](#) on Flickr
- [tom jervis](#) on Flickr
- Ifremer, Olivier Dugornay
- Tom Gulbrandsen, 2011
- [Fon-tina](#) on Flickr
- [zanzibar](#) on Flickr
- [F.d.W.](#) on Flickr
- [monkeyc.net](#) on Flickr
- [ecstaticist](#) on Flickr
- [gcaptain.com](#) on Flickr
- <http://www.pelamiswave.com/>
- VLIZ Fotogalerij Onze Kust / Van Ginderdeuren, Karl, 2011
- [jsorbieus](#) on Flickr
- [Joseeivissa](#) on Flickr
- [OneEighteen](#) on Flickr
- [Arthur40A](#) on Flickr
- [Francisco-PortoPortugal](#) on Flickr
- [IRRI Images](#) on Flickr